

HOMEDICS®

LEADERS IN BEAUTY & WELLBEING



TOTALCOMFORT ULTRASONIC HUMIDIFIER

2 YEAR GUARANTEE

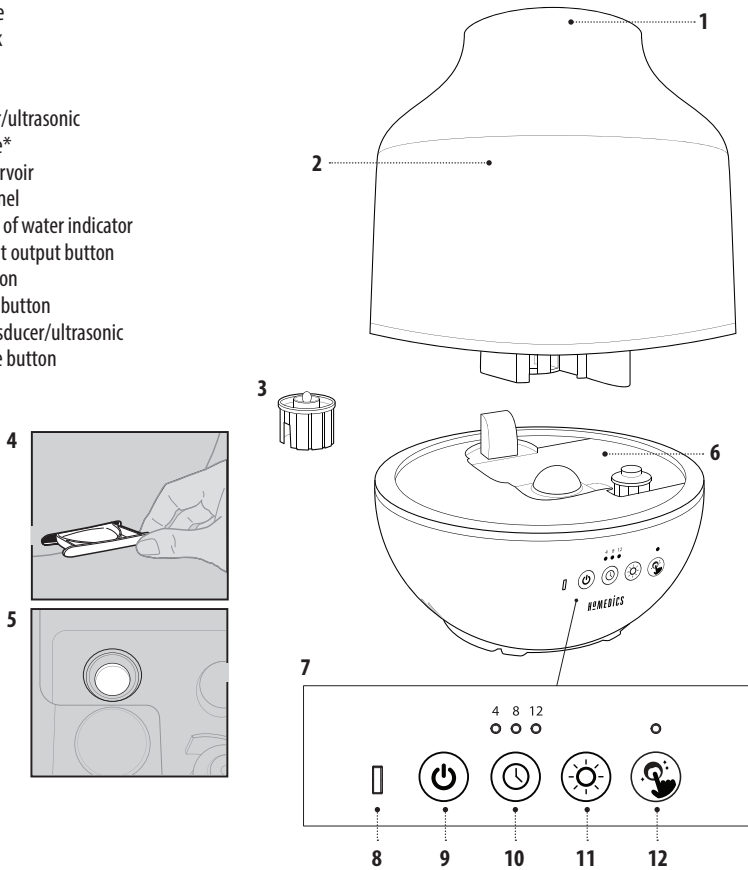
UHE-CM18-GB



Register your product today at
www.homedics.co.uk/product-registration

PRODUCT FEATURES

1. Mist nozzle
2. Water tank
3. Tank cap
4. Oil Tray
5. Transducer/ultrasonic membrane*
membrane*
6. Water reservoir
7. Control panel
8. Power/out of water indicator
9. Power/mist output button
10. Timer button
11. Nightlight button
12. Clean transducer/ultrasonic
membrane button



*This item is accessed below the water tank. Water tank must be removed to access

ULTRASONIC TECHNOLOGY

This humidifier uses ultrasonic, high-frequency technology to convert water into a fine mist that is dispersed evenly into the air.

MIST OUTPUT SETTINGS

Select low or high mist output.

360° ROTATING MIST NOZZLE

Easily adjust the mist direction.

BUILT-IN TIMER

Programmable timer, up to 12 hours.

7 NIGHTLIGHT COLOUR OPTIONS

Choose your favourite or scroll through all the colours.

AUTO SHUT-OFF PROTECTION

When the tank is empty the unit will shut off automatically.

CAPACITY

1.9 litres - 0.5 gallons

RUNTIME: 25 HOURS

Runtime is calculated based on the low setting. Depending on the natural humidity level in your home, the temperature of water you use, and the mist-level setting you choose, you may experience longer or shorter runtimes.

OIL TRAY

Includes 3 essential oil pads. Use your favourite essential oil (not included) to deliver aroma into the air.

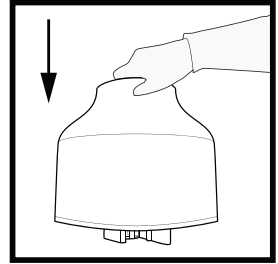
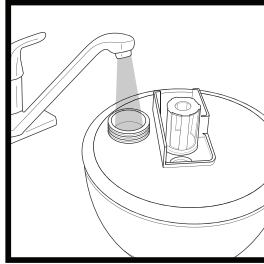
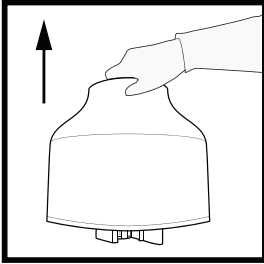
CLEAN TRANSDUCER/ULTRASONIC MEMBRANE

A red LED will illuminate above the clean icon, indicating it is time to clean the transducer/ultrasonic membrane.

HOW TO FILL

CAUTION: Before filling the tank with water, turn the power off and unplug the unit from the outlet.

NOTE: Always use 2 hands to carry the water tank.



1. Remove the tank from the humidifier base. Turn the tank upside down and remove the tank cap.
2. Fill the water tank with clean, cool (not cold) water. We recommend using distilled water if you live in a hard water area.
Never add essential oils or any other additives into the water tank or water reservoir. Even a few drops will damage the unit.
3. Replace the tank cap by turning to the right until tight. Flip over, and place the tank back on the humidifier base, making sure it is firmly seated.

HOW TO USE

POWER ON/OFF & MIST OUTPUT LEVEL BUTTON

Plug unit into a 220-240V electrical outlet. Press the power  button to turn unit on.

The humidifier will operate at low mist.

Long press power button for 2 seconds to switch between high and low mist output.

Press again to turn the humidifier off.

360° ROTATING MIST NOZZLE

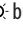


Rotate the mist output nozzle to adjust the mist direction.

AUTO-SHUTOFF PROTECTION



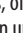
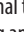
When the water in the tank is almost gone, the humidifying function will power off and the out of water LED will illuminate red, indicating it is time to refill the tank.

NOTE: It is normal to have a small amount of water in the tank and water reservoir after use.

NIGHTLIGHT

Press the nightlight  button to turn the nightlight on. The nightlight will continuously scroll through the 7 colours. Press the nightlight  button to stop scrolling and park on your favourite colour. Press the nightlight  button again to turn the nightlight off. The next time you turn the nightlight on, it will resume scrolling from the parked colour.

TIMER

Press the timer  button. Keep pressing the timer  button until the desired timer setting is lit on the display. The timer  button will cycle through the following settings: 4 hours, 8 hours, 12 hours, off. To cancel the timer at any time, press the timer  button until all timer LEDs are off.

NOTE: It is normal to have a small amount of water in the reservoir during and after use.

OIL TRAY

Use the optional essential oil feature to disperse your favourite scent into the room. See essential oil instructions in the Essential Oil section.

CLEAN TRANSDUCER/ULTRASONIC MEMBRANE

CLEAN will illuminate red after 60 hours of use, indicating it is time to clean the transducer/ultrasonic membrane. See cleaning instructions in the Cleaning and Care section.

ESSENTIAL OILS

Use essential oil (not included) to deliver scent into the air.

NOTE: For use with the included HoMedics essential oil pads only. Do not add essential oils anywhere else in the unit as it may cause damage.

NOTE: Do not leave a filled essential oil pad in the humidifier if it will be out of use for a long period of time.

ARE ESSENTIAL OILS SAFE TO USE AROUND PETS?

We should always exercise caution when using essential oils around our pets. Keep all essential oil and aromatherapy products (like diffusers) out of reach of pets. Keep open bottles away from pets to avoid internal consumption. We do not recommend the topical use of essential oils on pets, as they have a strong sense of smell and cannot get rid of the oil if they don't like it or it is disturbing them. When diffusing essential oils around pets, always diffuse in a well-ventilated area and leave an option for them to remove themselves from the space, such as leaving a door open. Every animal is different, so carefully observe how each animal responds when introducing an essential oil for the first time. If irritation occurs, discontinue the use of the essential oil. We recommend seeking medical attention if ingestion of essential oil occurs.

ADDING ESSENTIAL OILS

Please note that allergy friendliness is no longer guaranteed if the Essential Oil Scent Tray function is used, since essential oils may lead to allergic reactions.

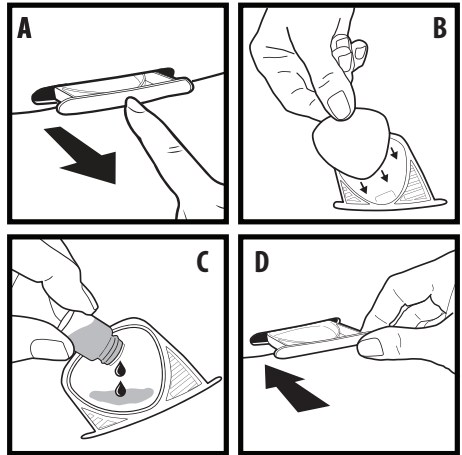
WARNING: Putting oil anywhere but the oil tray will damage the humidifier.

1. The oil tray is located on the back of the humidifier at the bottom of the humidifier base. Push to open and remove the tray (A).
2. Place 1 aroma pad (3 included) into the oil tray (B).
3. Add 5–7 drops of essential oil to the pad. You may use more or less depending on personal preference (C).

WARNING: Only place essential oil on the pad and NOT directly into the tray.

4. Place the oil tray back in its compartment and push to close. The scent will start automatically when the humidifier is turned on (D).

To purchase genuine HoMedics Replacement Essential Oil Pads (model #PP-UHE-PAD1), HoMedics Essential Oils or new Demineralisation Cartridges, (model # PP-UHE-HDC4), contact your local retailer or visit www.homedics.co.uk.



ABOUT WHITE DUST

Use of high mineral content hard water may cause a white mineral residue to accumulate on surfaces in the room near the humidifier. The mineral residue is commonly called “white dust.” The higher the mineral content (or, the harder your water is), the greater the potential for white dust. The white dust is not caused by a defect in the humidifier. It is caused only by minerals suspended in the water.

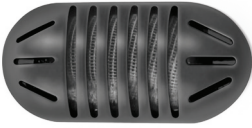
HOW AND WHY TO USE DEMINERALISATION CARTRIDGES

The HoMedics demineralisation cartridge will help reduce the potential for white dust, a deposit of minerals left behind from using hard water in your humidifier. The cartridge should be replaced every 30–40 fillings. The cartridge may need to be replaced more often if you are using very hard water. Replace the cartridge when you notice an increase in white dust buildup. If white dust still forms around the humidifier after a new cartridge has been installed, consider using distilled water. If you live in an area with hard water or use a water softener, we recommend using distilled water for best results. Never use water-softening additives in your humidifier.

INSTALLATION INSTRUCTIONS

1. Remove demineralisation cartridge from packaging and soak in water for 10 minutes.
2. Remove the mist nozzle and tank from the humidifier base.
3. Flip the tank over and unscrew the tank cap by turning the cap counterclockwise.
4. Fill the tank with water as shown in the How to Fill section of the instructions.
5. Add the soaked demineralisation cartridge to the tank.
6. Replace the tank cap by turning clockwise.
7. Turn the tank over and place the tank back on the base.
8. Place the mist nozzle on the water tank.

Demineralisation Cartridge



CLEANING AND CARE

CAUTION: Before cleaning, turn the unit off and unplug the unit.

CLEANING THE TRANSDUCER/ULTRASONIC MEMBRANE (E-H)

The transducer/ultrasonic membrane must be cleaned as necessary to remove water mineral deposits. Failure to do so may cause reduced or no mist output.

1. Remove the water tank from the humidifier base and set aside.
2. Pour out any remaining water inside the water reservoir by pouring in the direction of the drain arrow.
3. Clean the transducer/ultrasonic membrane with a 50/50 mix of white vinegar and water on a cotton swab. Wipe off with a damp cotton swab.

NEVER touch the transducer/ultrasonic membrane with your fingers; the natural oils in the skin can damage the surface.

NEVER submerge the base in water or any other liquid.

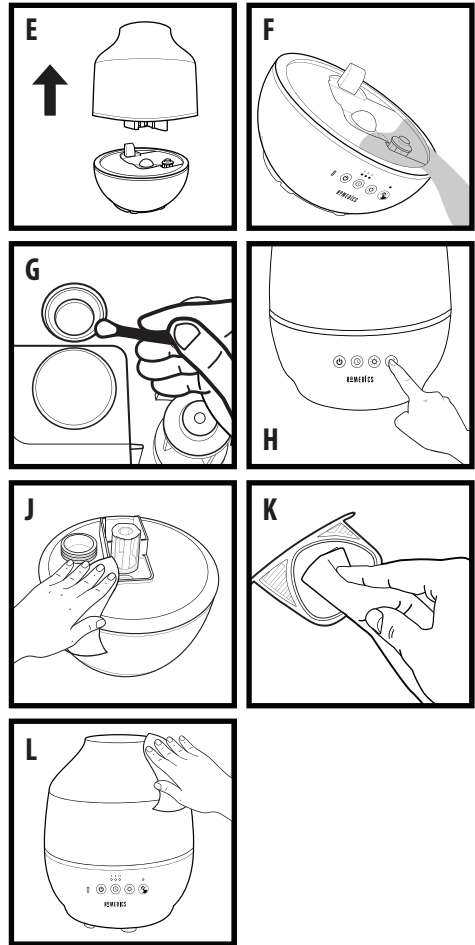
TO CLEAN THE TANK (J)

- Remove the water tank from the humidifier base by lifting it from the main unit. Unscrew the tank cap and rinse inside the tank with clean water.
- **Every day:** Empty and rinse the tank and tank cap before refilling.
- **Every week:** To remove any scale or buildup, use a 50/50 mixture of white vinegar and lukewarm water to clean the inside of the tank.

TO CLEAN THE OIL TRAY (K)

Open the oil tray and remove the pad. Essential oil pads should be changed when switching to a different essential oil scent. If continuing to use the same scent, set the essential oil pad aside for reuse. Wipe down the inside of the oil tray with a soft cloth. Place the essential oil pad back in the tray and close.

NOTE: Leave the essential oil pad out of the oil tray when storing.



TO CLEAN THE SURFACE (L)

- Clean the surface of the unit with a soft, damp cloth.
- **Before storing:** Clean the tank, reservoir, tank cap, and the transducer/ultrasonic membrane with a 50/50 mixture of white vinegar and water. Be sure to rinse and let all parts dry completely before storing. Clean the oil tray with a soft cloth.
- **After storing:** Rinse the tank with water before operating.

TROUBLESHOOTING

PROBLEM	POSSIBLE CAUSE	SOLUTION
No power/no mist from spout	<ul style="list-style-type: none"> • Unit is not plugged in • Unit not turned on • No power at unit • Low water level • Transducer/ultrasonic membrane needs cleaning 	<ul style="list-style-type: none"> • Plug unit in • Press the power button to turn the unit on • Check fuses or try a different outlet • Refill the tank with water • Follow Cleaning the Transducer/ Ultrasonic Membrane instructions in the Cleaning and Care section
Peculiar odour	<ul style="list-style-type: none"> • Unit is new • If unit is in use, the odor may be a dirty tank or old tank water • Old water in water reservoir 	<ul style="list-style-type: none"> • Remove the tank cap and let the tank air out in a cool, dry place for 12 hours • Empty the old water, clean the tank, and fill with clean water • Pour out any remaining water in the water reservoir
Excessive noise	<ul style="list-style-type: none"> • Unit is not level • Low water level 	<ul style="list-style-type: none"> • Place unit on a flat, even surface • Check the water level; refill the tank if the water is low
White dust accumulation	<ul style="list-style-type: none"> • Hard water used • Demineralisation Cartridge needs to be replaced 	<ul style="list-style-type: none"> • Use distilled water and a Demineralisation Cartridge • Replace Demineralisation Cartridge

READ ALL INSTRUCTIONS BEFORE USE. SAVE THESE INSTRUCTIONS FOR FUTURE REFERENCE.

- This appliance can be used by children aged from 8 years and above and persons with reduced physical, sensory or mental capabilities or lack of experience and knowledge if they have been given supervision or instruction concerning use of the appliance in a safe way and understand the hazards involved. Children shall not play with the appliance. Cleaning and user maintenance shall not be made by children without supervision.
- If the supply cord is damaged, it must be replaced by the manufacturer, its service agent or similarly qualified persons in order to avoid a hazard.
- The appliance is only to be used with the recommended vaporizing medium. The use of other substances may give rise to a toxic or fire risk.
- Be aware that high humidity levels may encourage the growth of biological organisms in the environment.
- Do not permit the area around the humidifier to become damp or wet. If dampness occurs, turn the output of the humidifier down. If the humidifier output volume cannot be turned down, use the humidifier intermittently. Do not allow absorbent materials, such as carpeting, curtains, drapes, or tablecloths, to become damp.
- Unplug the appliance during filling and cleaning.
- Never leave water in the reservoir when the appliance is not in use.

- Empty and clean the humidifier before storage.
- Clean the humidifier before next use.
- Warning: Micro-organisms that may be present in the water or in the environment where the appliance is used or stored, can grow in the water reservoir and be blown in the air causing very serious health risks when the water is not renewed and the tank is not cleaned properly every 3 days.
- Empty the tank and refill every third day. Before refilling, clean it with fresh tap water or cleaning agents if required by the manufacturer. Remove any scale, deposits, or film that has formed on the sides of the tank or on interior surfaces, and wipe all surfaces dry.
- The instructions for ultrasonic humidifiers and impeller humidifiers provided with specific antibacterial components to be added to the water, shall state, if relevant, the type or characteristics of the antibacterial component to be used and shall clarify that these additives shall be added to the water at each refilling.
- ALWAYS unplug the appliance from the electrical outlet immediately after using and before cleaning. To disconnect, turn all controls to the 'OFF' position, then remove plug from outlet.
- NEVER leave an appliance unattended when plugged in. Unplug from the mains outlet when not in use and before putting on or taking off parts or attachments.
- DO NOT reach for an appliance that has fallen in water or other liquids. Switch off at the mains and unplug it immediately. Keep dry – DO NOT operate in wet or moist conditions.
- NEVER insert pins or other metallic fasteners into the appliance.
- Use this appliance for the intended use as described in this booklet. DO NOT use attachments not recommended by HoMedics.
- NEVER operate the appliance if it has a damaged cord or plug, if it is not working properly, if it has been dropped or damaged, or dropped into water. Return it to the HoMedics Service Centre for examination and repair.
- Keep cord away from heated surfaces.
- Excessive use could lead to the product's excessive heating and shorter life. Should this occur, discontinue use and allow the unit to cool before operating.
- NEVER drop or insert any object into any opening.
- DO NOT operate where aerosol (spray) products are being used or where oxygen is being administered.
- DO NOT operate under a blanket or pillow. Excessive heating can occur and cause fire, electrocution or injury to persons.
- DO NOT carry this appliance by the cord or use cord as a handle.
- DO NOT use outdoors.
- This product requires a 220-240 V AC power supply.
- DO NOT attempt to repair the appliance. There are no user serviceable parts. For service, send to a HoMedics Service Centre. All servicing of this appliance must be performed by authorised HoMedics service personnel only.
- Never block the air openings of the appliance or place it on a soft surface,

such as a bed or couch. Keep air openings free of lint, hair etc.

- Do not place or store appliance where it can fall or be pulled into a bath or sink. Do not place in or drop into water or other liquid.
- Failure to follow the above may result in the risk of fire or injury.
- If you have any concerns regarding your health, consult a doctor before using this appliance.
- This appliance should NEVER be used by any individual suffering from any physical ailment that would limit the user's capacity to operate the controls.
- If the product feels excessively hot, switch off at mains and contact the HoMedics Service Centre.
- Do not run cord under carpeting. Do not cover cord with throw rugs, runners or similar coverings. Do not route cord under furniture or appliances. Arrange cord away from traffic areas where it can be tripped over.


2 YEAR GUARANTEE

FKA Brands Ltd guarantees this product from defect in material and workmanship for a period of 2 years from the date of purchase, except as noted below. This FKA Brands Ltd product guarantee does not cover damage caused by misuse or abuse; accident; the attachment of any unauthorised accessory; alteration to the product; or any other conditions whatsoever that are beyond the control of FKA Brands Ltd. This guarantee is effective only if the product is purchased and operated in the UK / EU. A product that requires modification or adaptation to enable it to operate in any country other than the country for which it was designed, manufactured, approved and / or authorised, or repair of products damaged by these modifications is not covered under this guarantee. FKA Brands Ltd shall not be responsible for any type of incidental, consequential or special damages.

To obtain guarantee service on your product, return the product post-paid to your local service centre along with your dated sales receipt (as proof of purchase). Upon receipt, FKA Brands Ltd will repair or replace, as appropriate, your product and return it to you, post-paid. Guarantee is solely through HoMedics Service Centre. Service of this product by anyone other than the HoMedics Service Centre voids the guarantee. This guarantee does not affect your statutory rights.

For your local HoMedics Service Centre, go to www.homedics.co.uk/servicecentres

WEEE explanation

 This marking indicates that this product should not be disposed with other household wastes throughout the EU. To prevent possible harm to the environment or human health from uncontrolled waste disposal, recycle it responsibly to promote the sustainable reuse of material resources. To return your used device, please use the return and collection systems or contact the retailer where the product was purchased. They can take this product for environmental safe recycling.



Manufacturer & Importer:

FKA Brands Ltd, Somerhill Business Park, Tonbridge, Kent TN11 0GP, UK

EU Importer:

FKA Brands Ltd, 29 Earlsfort Terrace, Dublin 2, Ireland

Customer Support: +44(0) 1732 378557 | support@homedics.co.uk

IB-UHECM18GB-1021-02